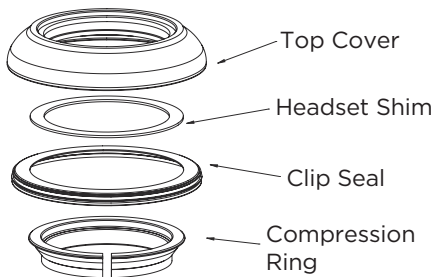


## Top Cap Height Adjustment

---

**Note:** Installation of Headset Shim is only required if there is contact between frame and Top cover.

1. Pinch the Compression Ring with two fingers and remove it from headset assembly.
2. Pull out Clip Seal.
3. Place the included Headset Shim in the proper location (as shown below). Reinstall Clip Seal. Pinch the Compression ring and push into assembly until it snaps into position, locking all parts in place.



*The exact configuration shown is only relevant to IS and ZS Forty Series headset uppers. For all other headsets (Forty EC uppers, and ALLL 70 & 110) simply snap the compression ring out and place IS shims directly in between the compression ring and the top cover. The seal does not need to be removed.*