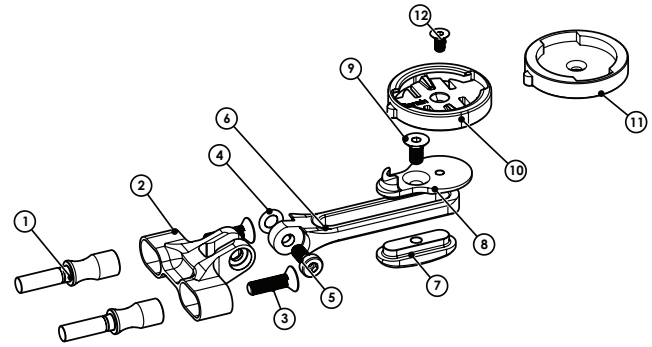
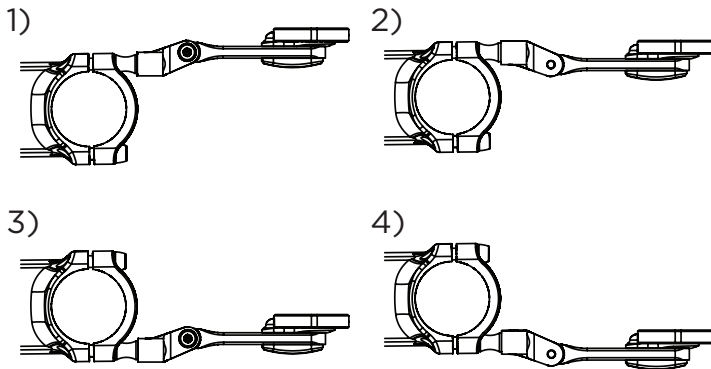


Computer Mount Installation Instructions

THE STEM, STEM FACEPLATE AND STEM FACEPLATE BOLTS ARE CRITICAL PARTS OF THE STEM/HANDLEBAR ASSEMBLY. FOLLOW THESE INSTRUCTIONS FOR CORRECT AND SAFE INSTALL.

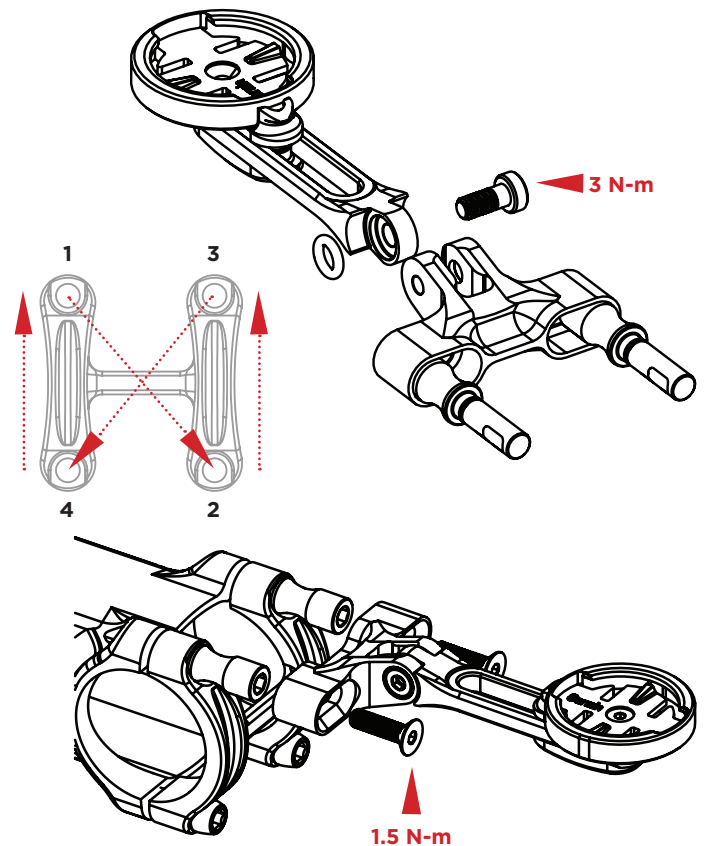
1. Determine which mounting location you prefer. The Cane Creek Computer Mount can be installed in four (4) different orientations using the top or bottom stem faceplate bolts (22-35mm bolt width).



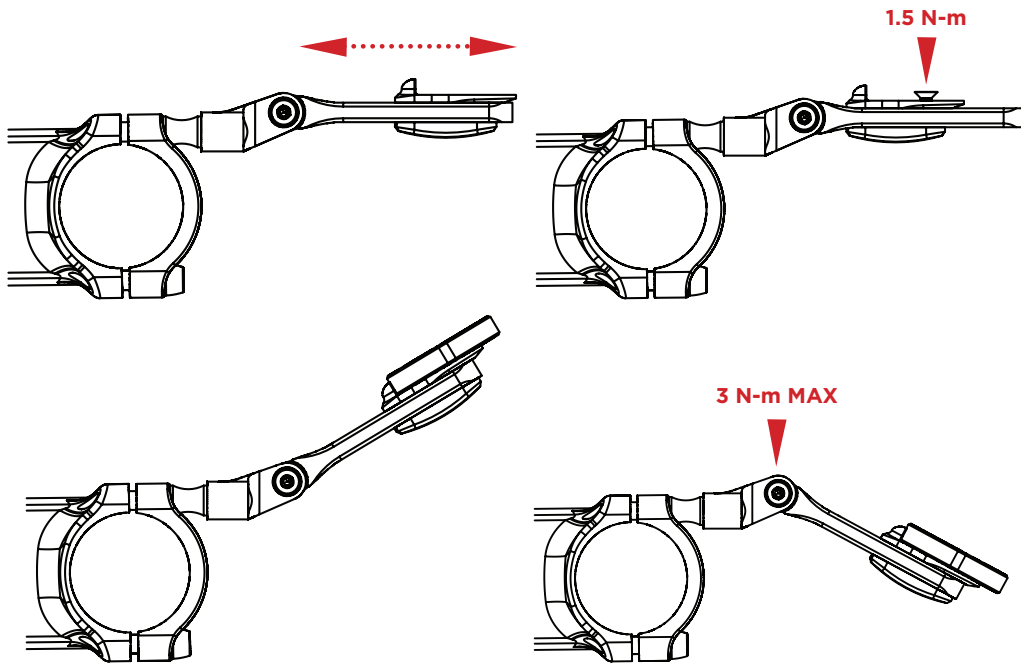
BOM ID	Description	Qty
1	Faceplate Screw	2
2	Faceplate Mount	1
3	Faceplate Mounting Screw	2
4	Angle Adjust O-Ring	1
5	Angle Adjust Screw	1
6	Slotted Arm	1
7	Mounting Slug	1
8	Computer Insert Pad	1
9	Computer Insert Pad Screw	1
10	Computer Insert - Garmin	1
11	Computer Insert - Wahoo	1
12	Computer Insert Screw	1

The faceplate mount can be flipped for further customization. If you prefer to flip the faceplate mount, remove the angle adjust screw with a 3mm hex wrench, flip the faceplate mount and reinstall the slotted arm being careful to not damage the angle adjust o-ring. **The o-ring can only be installed on the side of the slotted arm with the recess.** Tighten the bolt to 3 N-m.

2. Once you have determined your preferred orientation, remove the factory installed stem faceplate bolts.
3. Install the computer mount faceplate bolts making sure to tighten in an alternating X pattern. **Be sure to re-torque all stem faceplate bolts to stem manufacturer's recommended settings.**
4. Center the computer mount and secure it to the faceplate bolts with the faceplate mounting screws using a 2.5mm hex wrench and tighten to 1.5 N-m.



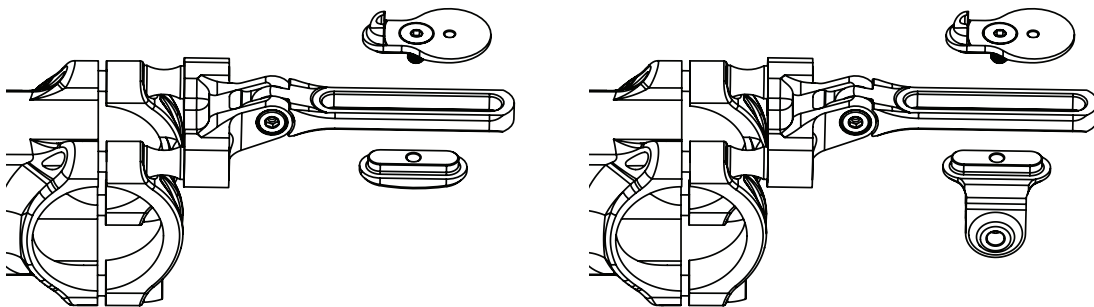
- Determine the distance you would like your computer to be from your stem. Remove the computer insert with a 2mm hex wrench. Loosen the insert pad bolt but do not remove it. Slide the insert pad to your preferred location and re-tighten the pad insert bolt to 1.5 N-m and reinstall the computer insert.
- Determine the angle you would like your computer and tighten the angle adjust bolt to **3 N-m MAX**.



Light/Camera/Accessory Mount -

*The computer mount with the Accessory Mount has a weight carrying capacity of **375g MAX**.*

- Remove Computer insert with 2mm hex wrench.
- Remove pad insert bolt with 2.5mm hex wrench.
- Install the Accessory Mount under the slotted arm with the pad insert bolt and tighten to 1.5 N-m.
- Mount your accessory to the accessory pivot screw and tighten to 3 N-m.



Warranty Information

LIMITED ONE (1) YEAR WARRANTY ON CANE CREEK

The Computer Mount is warranted against defects in materials or workmanship for one year from the date of purchase. This warranty applies to the original owner only. At their discretion, Cane Creek Cycling Components will repair or replace any defective stem with the same or comparable model. This warranty is void if the stem is damaged as a result of abuse, alterations, modifications, improper adjustment, lack of maintenance, crashes, or other conditions judged by Cane Creek Cycling Components to be abnormal, excessive, or improper. It is mandatory that a Return Authorization Number (RA#) is received (by calling or emailing Cane Creek) before any return is made. Additionally, a dated Proof of Purchase must accompany the stem when returned.